



MAS TECH
INDUSTRIES

Schneider
Electric

**PANEL
BUILDER**



WALL MOUNTED ENCLOSURES

**CATALOG
2023**



**WALL
MOUNTED
ENCLOSURES**

CERTIFICATE



ISO 9001:2015



the most reliable switchboard combination



100%
IEC 61439-1&2

Schneider
Electric

Spacial ™Thalassa™

Schneider
Electric

SPACIAL™ STEEL ENCLOSURES

Metal enclosures and boxes

Steel: Indoor non-clean industrial environment

- Universal range, for industry.
- EMC (electromagnetic compatibility) range, against electromagnetic disturbances (treated with Aluzinc).

304L - 316L stainless steel: Demanding industrial environment

- 304L stainless steel, for resistance to corrosion and ease of cleaning (often used in food production environments).
- 316L stainless steel, also known as "marine stainless steel," for very high resistance to corrosion (used in saline or chlorinated environments).
- Range of ATEX enclosures, for potentially explosive atmospheres.

Product family names:

Spacial S3DC: Steel wall-mounting enclosures

Spacial SM: Compact metal enclosures

Spacial SF: Modular metal enclosures

Spacial S3X: Stainless-steel wall-mounting enclosures

Spacial SMX: Stainless-steel monobloc floor-standing enclosures

Spacial SFX: Stainless-steel modular enclosures

Thalassa™ Polyester Enclosures

Insulated enclosures and boxes

Without the right protection, harsh environments can expose your installation to chemicals or other substances.

Our Thalassa industrial boxes in ABS or polycarbonate are strong, easy to install, and designed to be used in highly demanding environments.

Insulating polyester and plastic materials (ABS, polycarbonate): Outdoor infrastructures and severe industrial environments

Outdoor infrastructures and electrical installations are exposed to direct sunlight, rain, saline mist, extreme temperatures, oil splashes, chemical and corrosive agents, and are in contact with the public.

- Universal range, for industry.
- Range of ATEX enclosures, for potentially explosive atmospheres.

Product family names:

- **Thalassa PLM: Polyester wall-mounting enclosures**
- **Thalassa PLM: Polyester floor-standing enclosures**



WALL MOUNTED ENCLOSURES



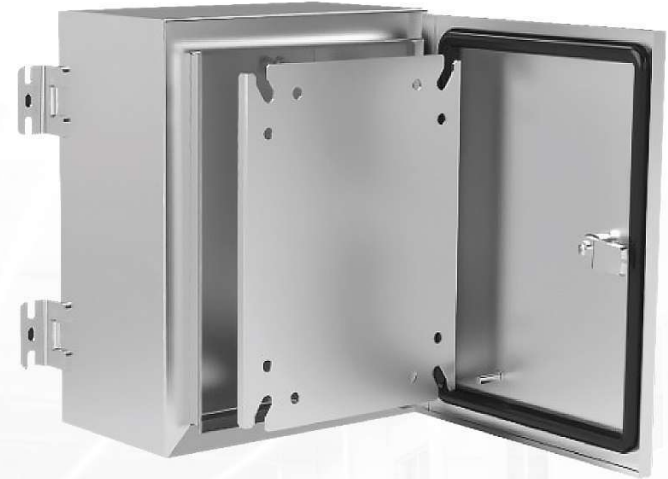
STEEL ENCLOSURES



STAINLESS STEEL ENCLOSURES



SEE THROW ENCLOSURES



WALL MOUNTED ENCLOSURES



PANELS

